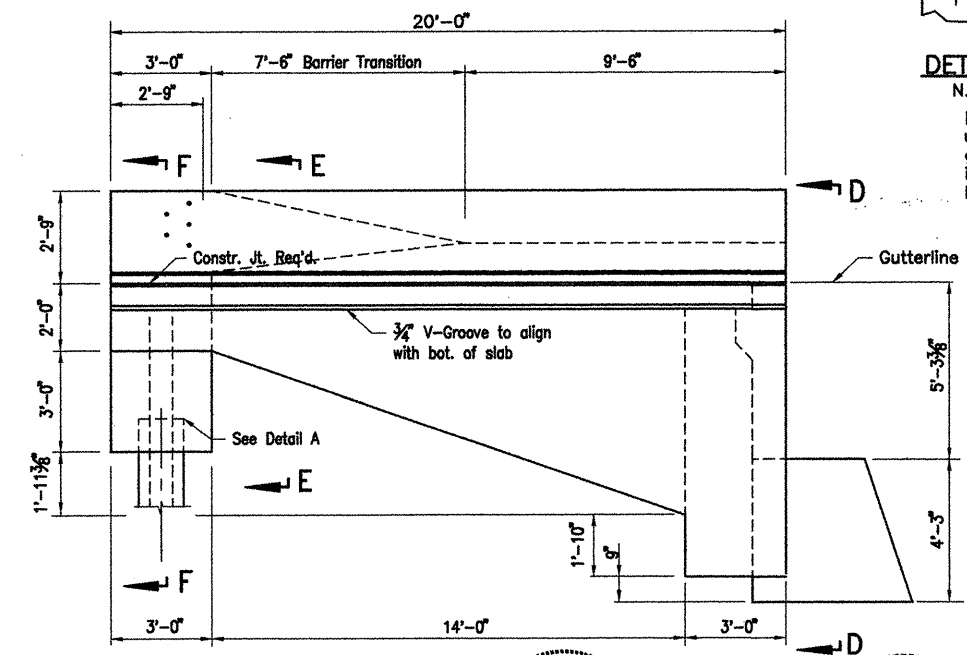
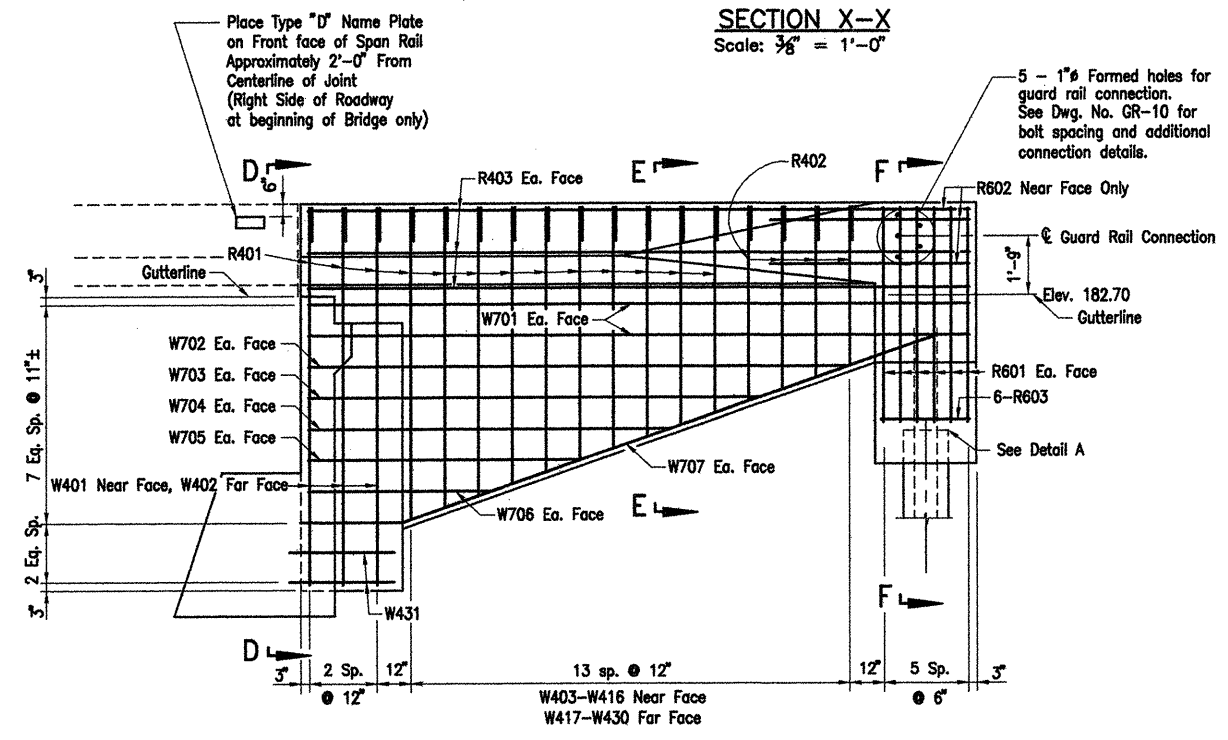
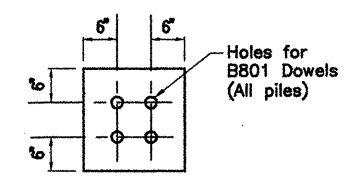
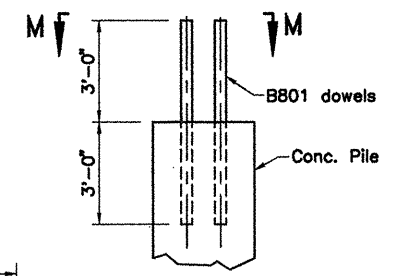
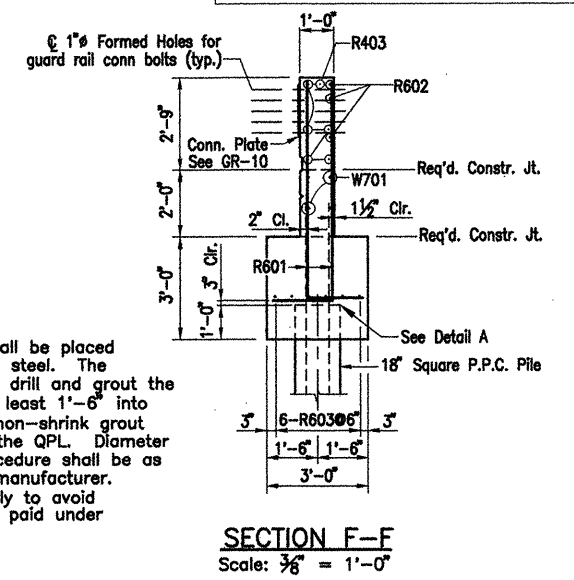
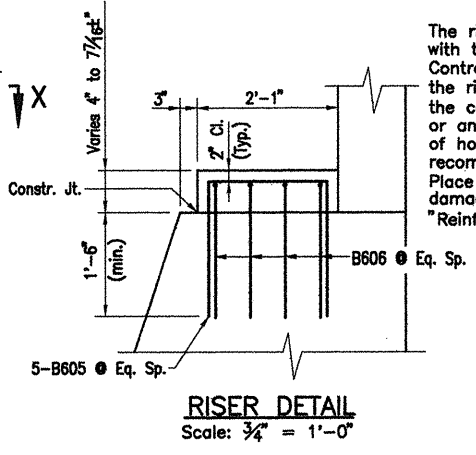
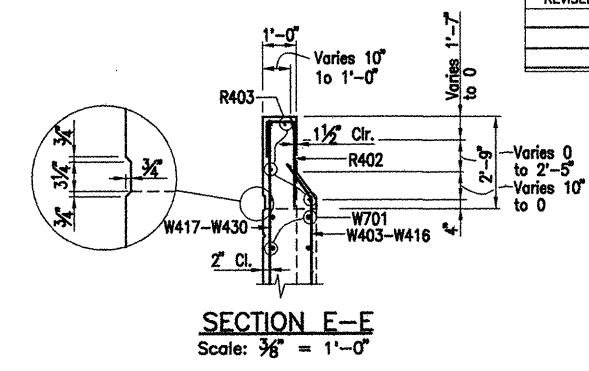
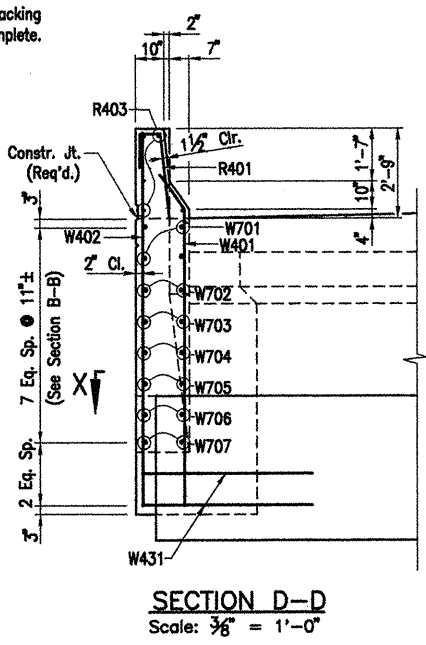
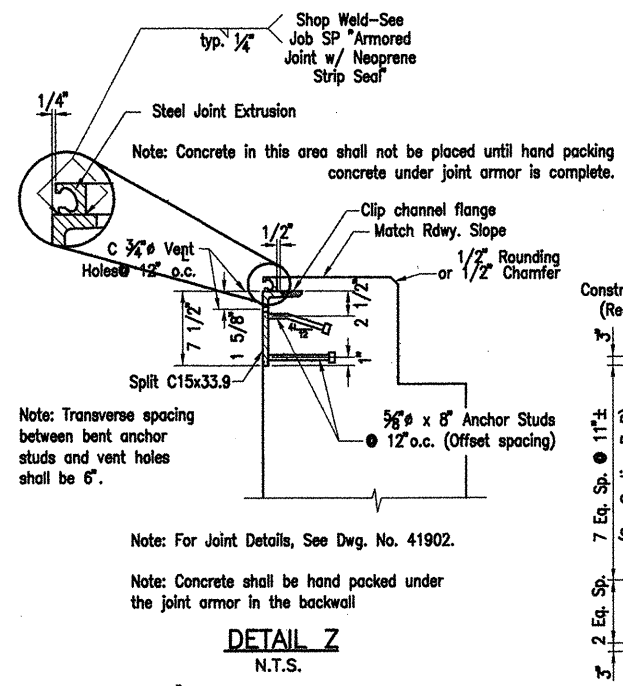
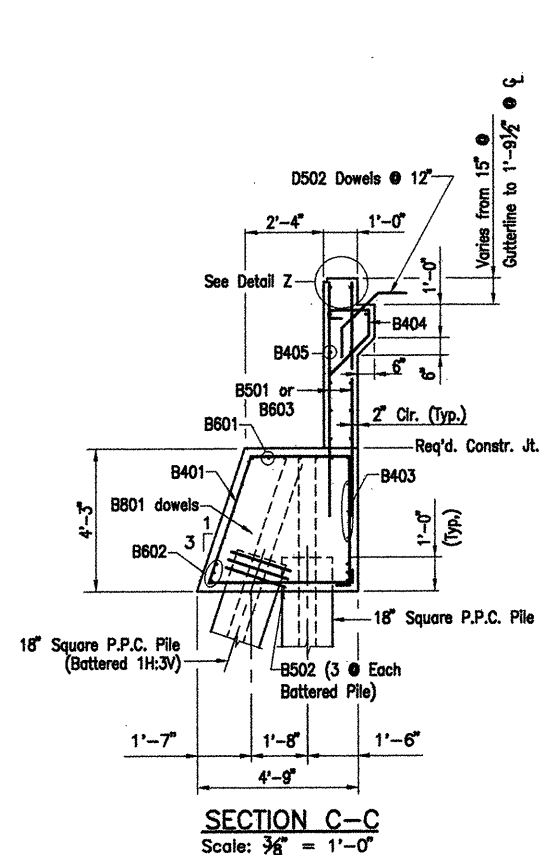


DATE REVISED	DATE FILMED	DATE REVISED	DATE FILMED	FED. ROAD NO.	STATE	FED. AID PROJ. NO.	SHEET NO.	TOTAL SHEETS
					ARK.			
						JOB NO. 110503	88 233	
						07027 END BENT	41893	



For Sections A-A, B-B and C-C, see Dwg. No. 41892.

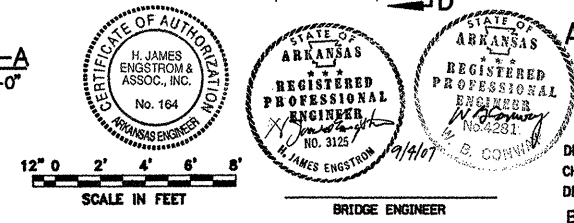
ALTERNATE NO. 1
DETAIL OF BENTS - WHITE RIVER RELIEF ABUTMENTS - END BENTS 1, 21
(SHEET 2 OF 2)

ROC ROE & WHITE RIVER RELIEF STRS. & APPRS. (CLARENDON) (F)
MONROE COUNTY

ROUTE 79 SEC. 13
LITTLE ROCK, ARK.

ARKANSAS STATE HIGHWAY COMMISSION

Engstrom/Modjeski and Masters, Inc.



DRAWN BY: FS DATE: Sept. 07 FILENAME: b11050312.d2
CHECKED BY: YO DATE: Nov. 01 SCALE: $\frac{3}{8}" = 1'-0"$
DESIGNED BY: FS DATE: Nov. 01
BRIDGE NO. 07027 DRAWING NO. 41893